

2020 BBF Finals Seniors - Long



Oil Pattern Distance: 45 Feet **Reverse Brush Drop:** 45 Feet **Oil Per Board:** 40 uL
Forward Oil Total: 11 mL **Reverse Oil Total:** 12.68 mL **Volume Oil Total:** 23.68 mL
Forward Boards Crossed: 275 Boards **Reverse Boards Crossed:** 317 Boards **Total Boards Crossed:** 592 Boards

	Start	Stop	Loads	Speed	Crossed	Start	End	Feet	T.Oil
1	2L	2R	4	14	148	0.0	5.9	5.9	5920
2	12L	12R	2	14	34	5.9	9.8	3.9	1360
3	13L	13R	3	14	45	9.8	15.7	5.9	1800
4	14L	14R	2	18	26	15.7	20.8	5.1	1040
5	15L	15R	2	18	22	20.8	25.9	5.1	880
6	2L	2R	0	18	0	25.9	33.0	7.1	0
7	2L	2R	0	26	0	33.0	40.0	7.0	0
8	2L	2R	0	30	0	40.0	45.0	5.0	0

Forward Reverse More

	Start	Stop	Loads	Speed	Crossed	Start	End	Feet	T.Oil
1	2L	2R	0	30	0	45.0	38.0	-7.0	0
2	14L	14R	2	18	26	38.0	32.9	-5.1	1040
3	13L	13R	2	18	30	32.9	27.8	-5.1	1200
4	12L	12R	3	18	51	27.8	20.2	-7.6	2040
5	11L	11R	3	14	57	20.2	14.3	-5.9	2280
6	10L	10R	2	14	42	14.3	10.4	-3.9	1680
7	2L	2R	3	10	111	10.4	6.2	-4.2	4440
8	2L	2R	0	10	0	6.2	0.0	-6.2	0

Forward Reverse More

Conditioner:
Type In or Select One

TransferType:
Type In or Select One

Forward



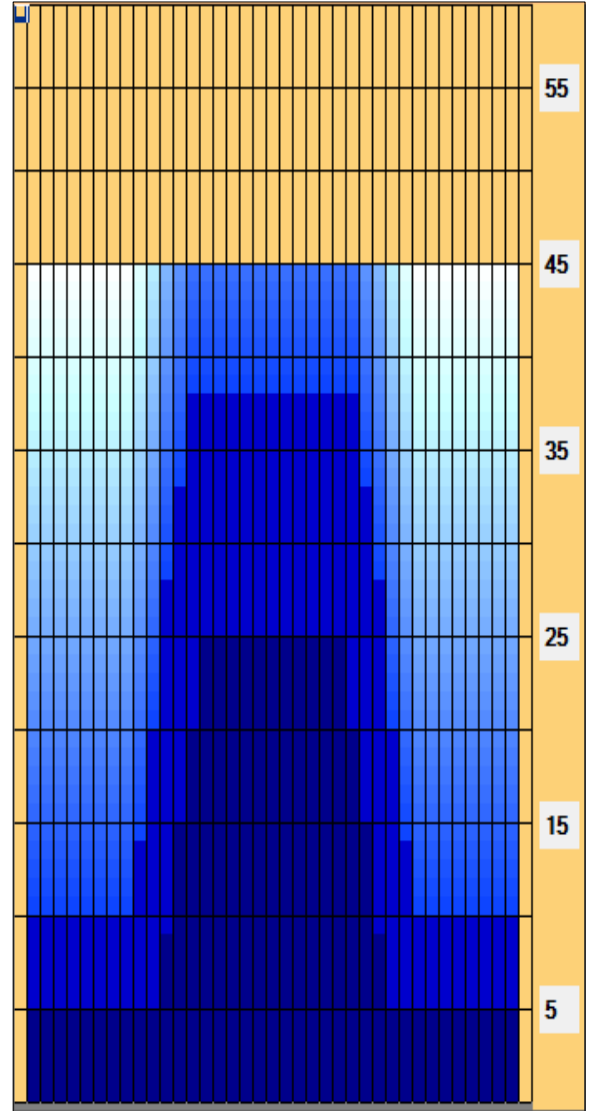
Reverse



Combined



Buff



Item	3L-7L:18L-18R	8L-12L:18L-18R	13L-17L:18L-18R	18L-18R:17R-13R	18L-18R:12R-8R	18L-18R:7R-3R
Description	Outside Track:Middle	Middle Track:Middle	Inside Track:Middle	Middle:Inside Track	Middle:Middle Track	Middle:Outside Track
Track Zone Ratio	4	2.69	1.06	1.06	2.69	4

