

2020 BBF Individual Finals - Middle



Oil Pattern Distance: 41 Feet **Reverse Brush Drop:** 41 Feet **Oil Per Board:** 40 uL
Forward Oil Total: 15.04 mL **Reverse Oil Total:** 9.56 mL **Volume Oil Total:** 24.6 mL
Forward Boards Crossed: 376 Boards **Reverse Boards Crossed:** 239 Boards **Total Boards Crossed:** 615 Boards

	Start	Stop	Loads	Speed	Crossed	Start	End	Feet	T.Oil
1	2L	2R	3	10	111	0.0	2.8	2.8	4440
2	7L	7R	1	10	27	2.8	4.2	1.4	1080
3	8L	8R	1	14	25	4.2	6.1	1.9	1000
4	9L	9R	2	14	46	6.1	10.0	3.9	1840
5	10L	9R	2	14	44	10.0	13.9	3.9	1760
6	11L	10R	2	14	40	13.9	17.8	3.9	1600
7	12L	11R	2	18	36	17.8	22.9	5.1	1440
8	13L	12R	2	18	32	22.9	28.0	5.1	1280
9	14L	12R	1	18	15	28.0	30.5	2.5	600
10	2L	2R	0	18	0	30.5	34.0	3.5	0
11	2L	2R	0	26	0	34.0	41.0	7.0	0

	Start	Stop	Loads	Speed	Crossed	Start	End	Feet	T.Oil
1	2L	2R	0	30	0	41.0	30.0	-11.0	0
2	13L	12R	1	22	16	30.0	26.9	-3.1	640
3	12L	11R	1	22	18	26.9	23.8	-3.1	720
4	11L	10R	1	22	20	23.8	20.7	-3.1	800
5	2L	2R	3	18	111	20.7	13.1	-7.6	4440
6	2L	2R	2	14	74	13.1	9.2	-3.9	2960
7	2L	2R	0	14	0	9.2	0.0	-9.2	0

Conditioner:
Type In or Select One

TransferType:
Type In or Select One

Forward



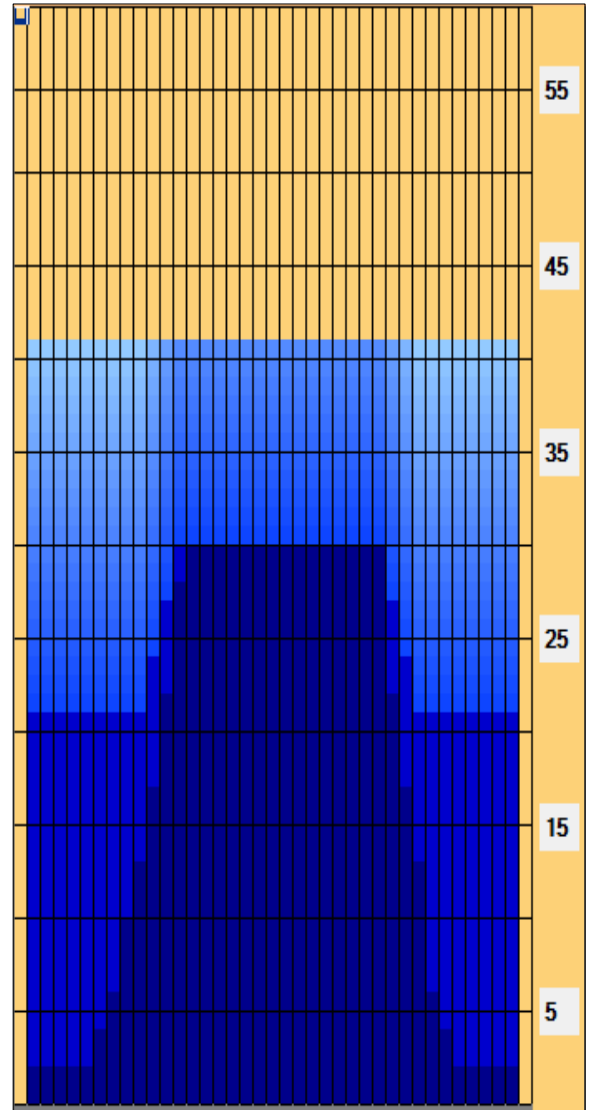
Reverse



Combined



Buff



Item	3L-7L:18L-18R	8L-12L:18L-18R	13L-17L:18L-18R	18L-18R:17R-13R	18L-18R:12R-8R	18L-18R:7R-3R
Description	Outside Track:Middle	Middle Track:Middle	Inside Track:Middle	Middle:Inside Track	Middle:Middle Track	Middle:Outside Track
Track Zone Ratio	2.93	1.64	1.01	1	1.41	2.93

