

BBF 2021



Oil Pattern Distance:	34 Feet	Reverse Brush Drop:	34 Feet	Oil Per Board:	50 uL
Forward Oil Total:	11.7 mL	Reverse Oil Total:	11.65 mL	Volume Oil Total:	23.35 mL
Forward Boards Crossed:	234 Boards	Reverse Boards Crossed:	233 Boards	Total Boards Crossed:	467 Boards

	Start	Stop	Loads	Speed	Crossed	Start	End	Feet	T.Oil
1	2L	2R	1	10	37	0.0	0.0	0.0	1850
2	3L	3R	1	14	35	0.0	1.9	1.9	1750
3	5L	5R	1	18	31	1.9	4.4	2.5	1550
4	6L	6R	2	18	58	4.4	9.5	5.1	2900
5	8L	8R	2	18	50	9.5	14.6	5.1	2500
6	9L	9R	1	18	23	14.6	17.1	2.5	1150
7	2L	2R	0	18	0	17.1	25.0	7.9	0
8	2L	2R	0	30	0	25.0	34.0	9.0	0

Navigation: Forward Reverse More

	Start	Stop	Loads	Speed	Crossed	Start	End	Feet	T.Oil
1	2L	2R	0	30	0	34.0	26.0	-8.0	0
2	11L	11R	2	14	38	26.0	22.1	-3.9	1900
3	9L	9R	2	14	46	22.1	18.2	-3.9	2300
4	7L	7R	2	14	54	18.2	14.3	-3.9	2700
5	6L	6R	1	14	29	14.3	12.4	-1.9	1450
6	5L	5R	1	14	31	12.4	10.5	-1.9	1550
7	3L	3R	1	10	35	10.5	9.1	-1.4	1750
8	2L	2R	0	10	0	9.1	0.0	-9.1	0

Navigation: Forward Reverse More

Conditioner:
Type In or Select One

TransferType:
Type In or Select One

Forward



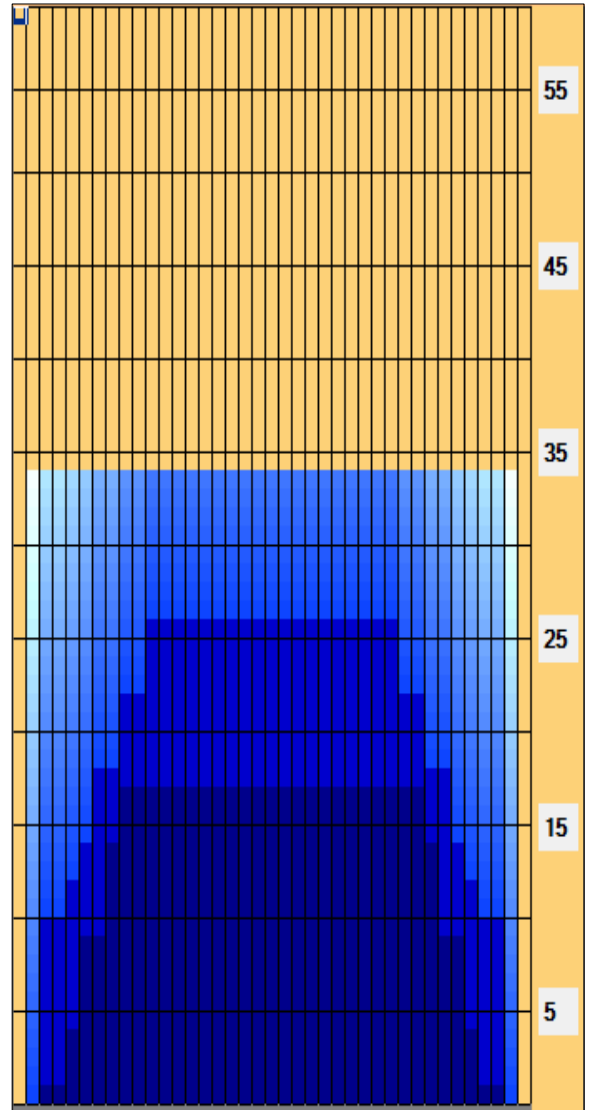
Reverse



Combined



Buff



Item	3L-7L:18L-18R	8L-12L:18L-18R	13L-17L:18L-18R	18L-18R:17R-13R	18L-18R:12R-8R	18L-18R:7R-3R
Description	Outside Track:Middle	Middle Track:Middle	Inside Track:Middle	Middle:Inside Track	Middle:Middle Track	Middle:Outside Track
Track Zone Ratio	2.93	1.12	1	1	1.12	2.93

